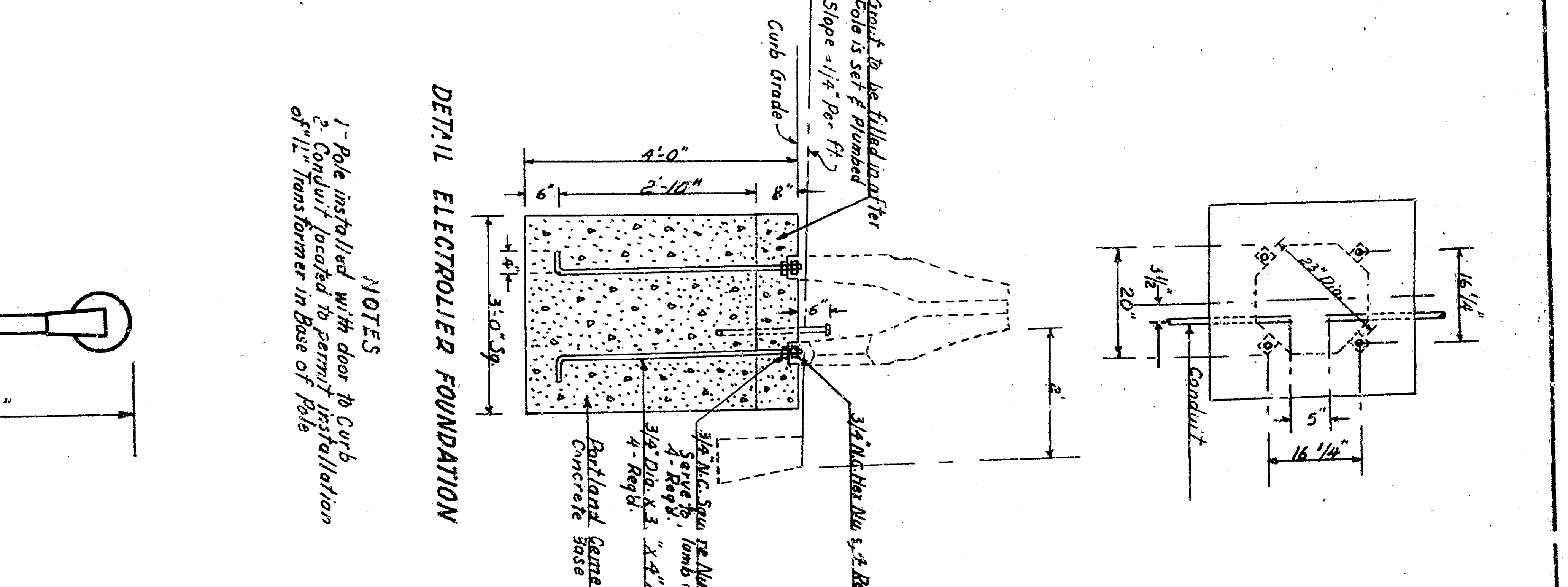
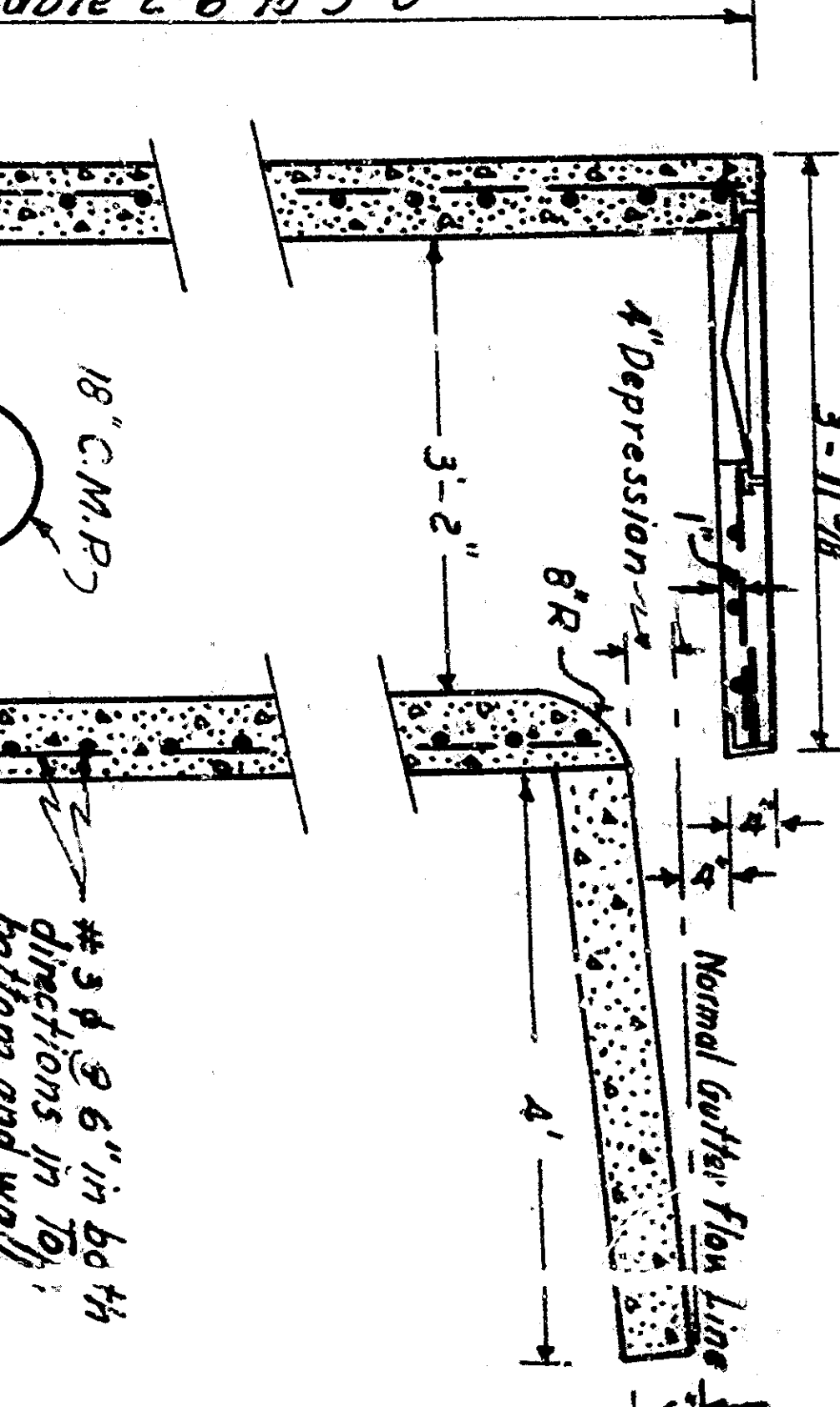
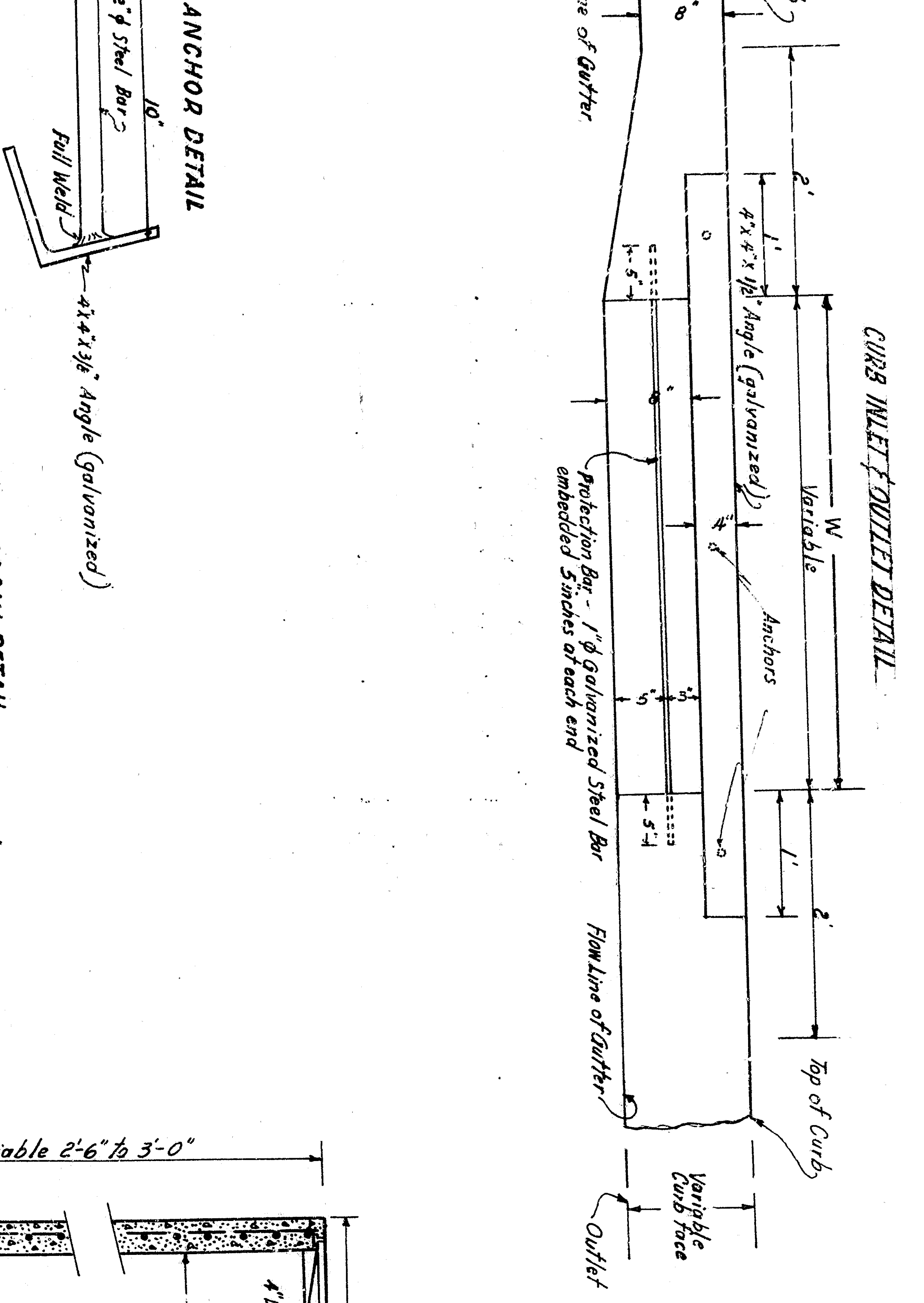
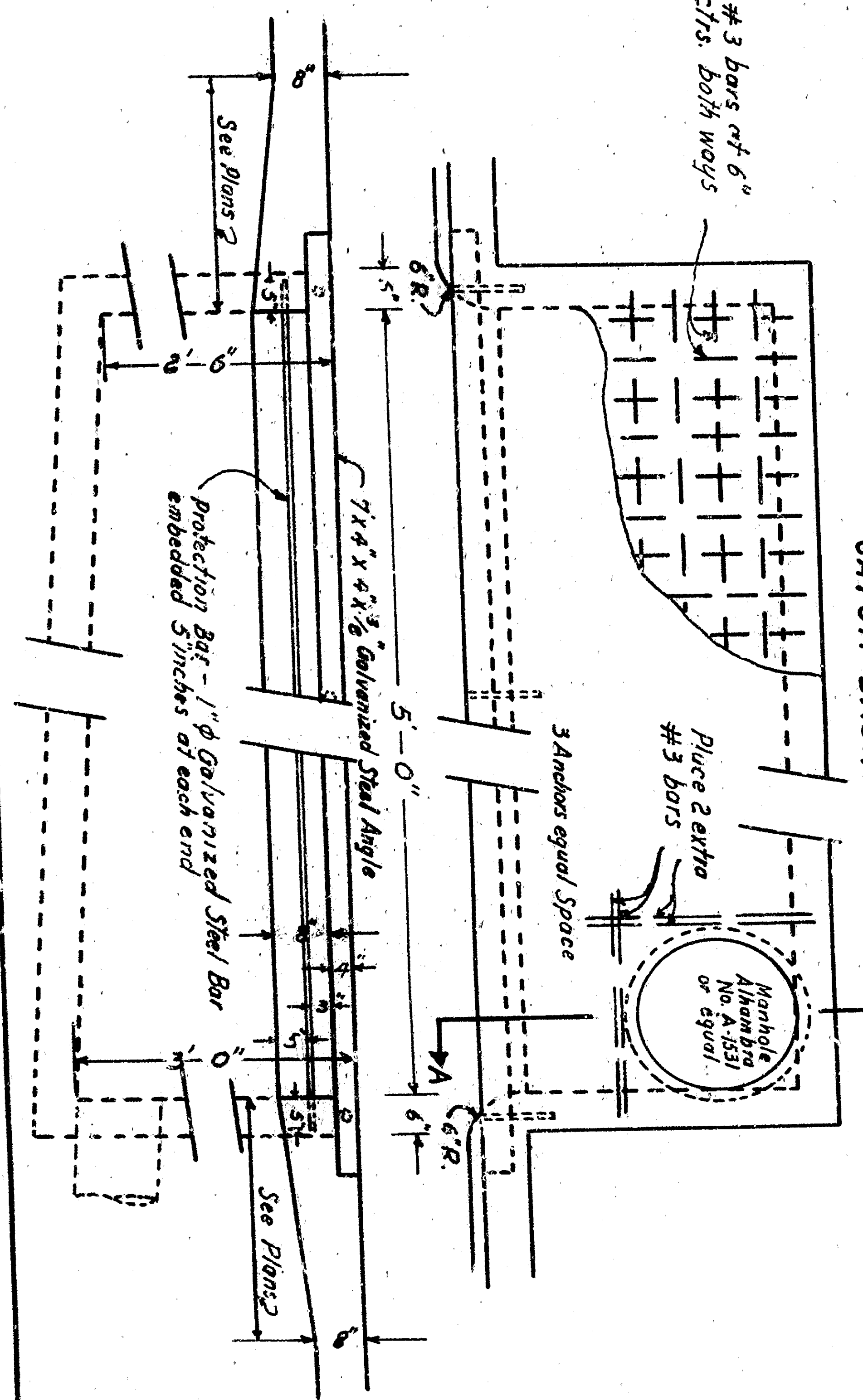
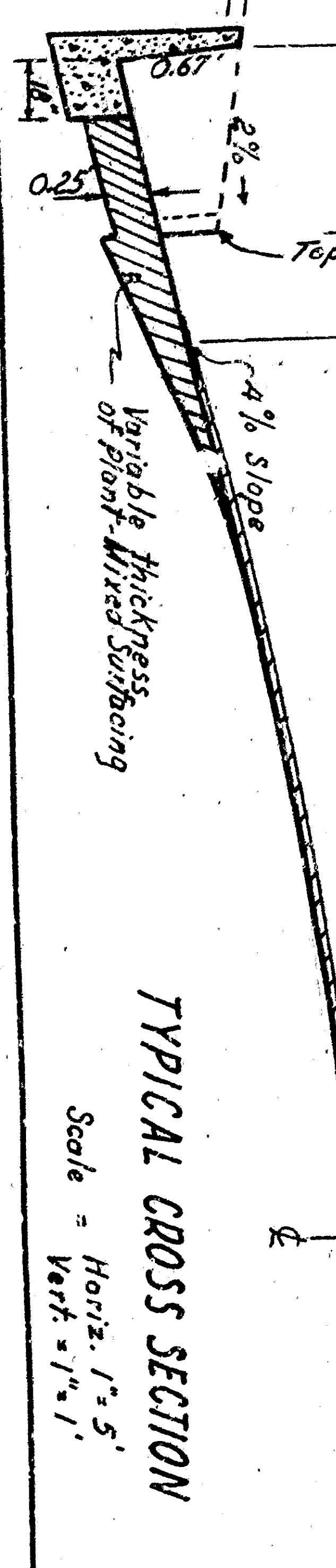
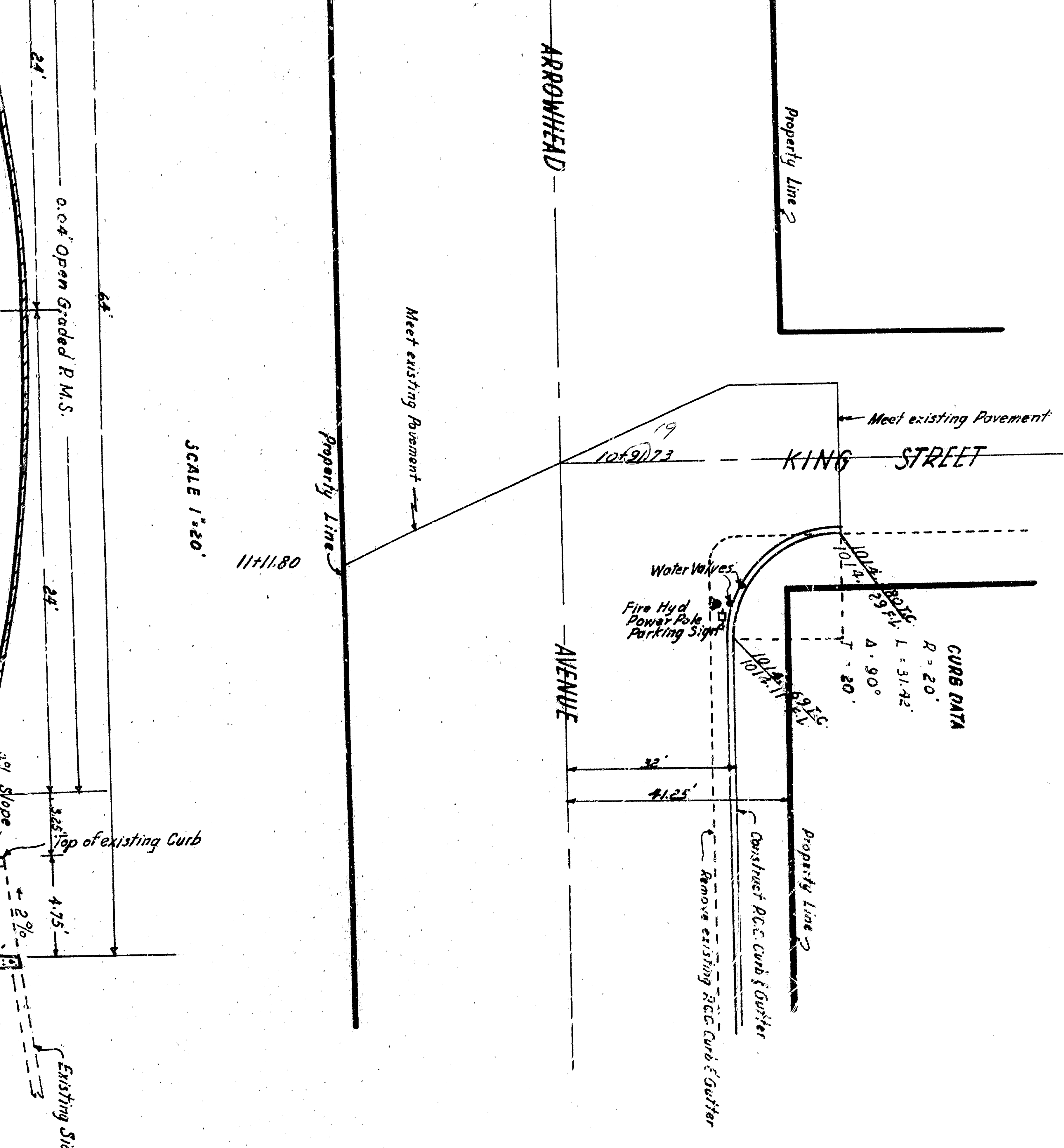
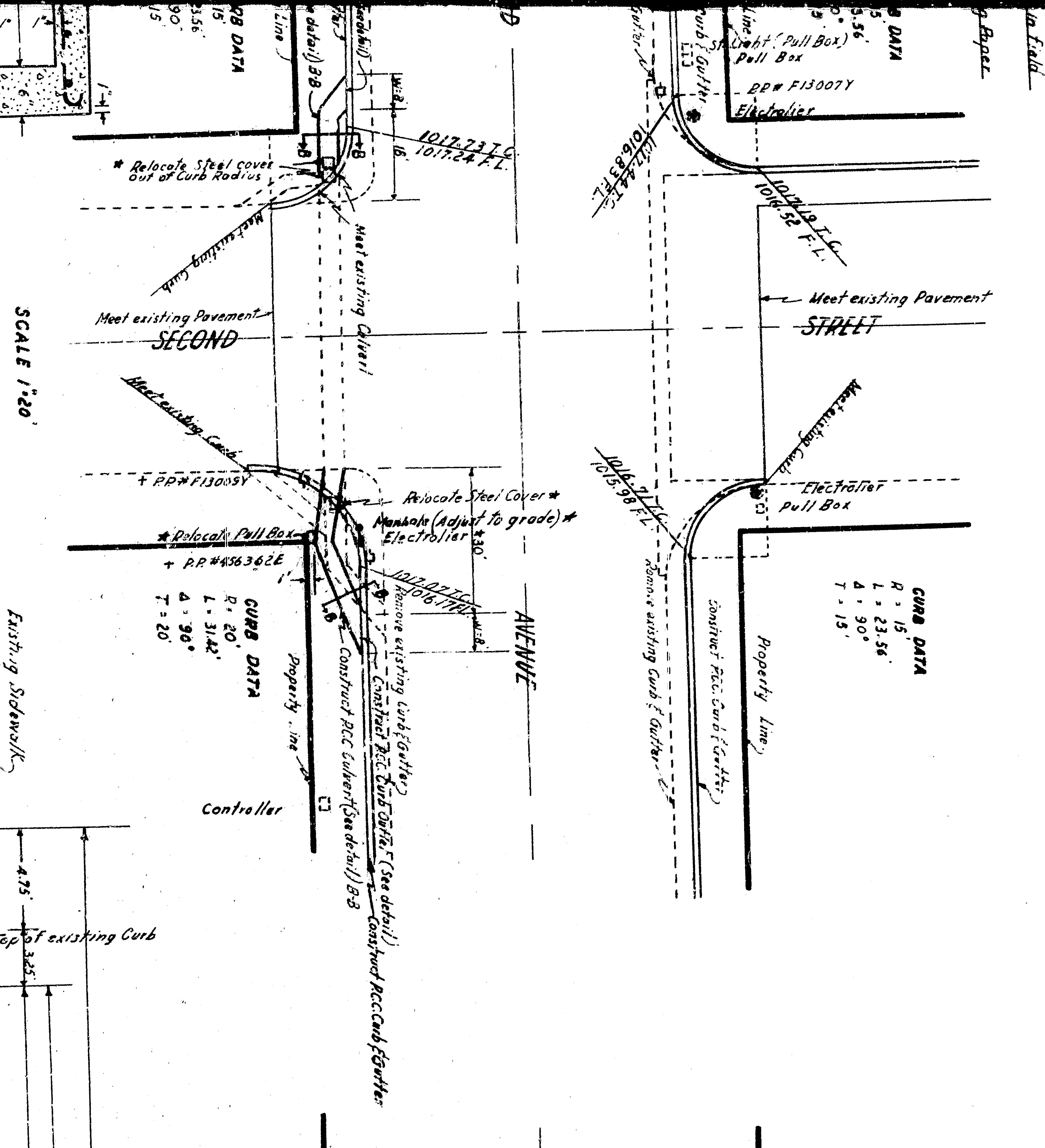
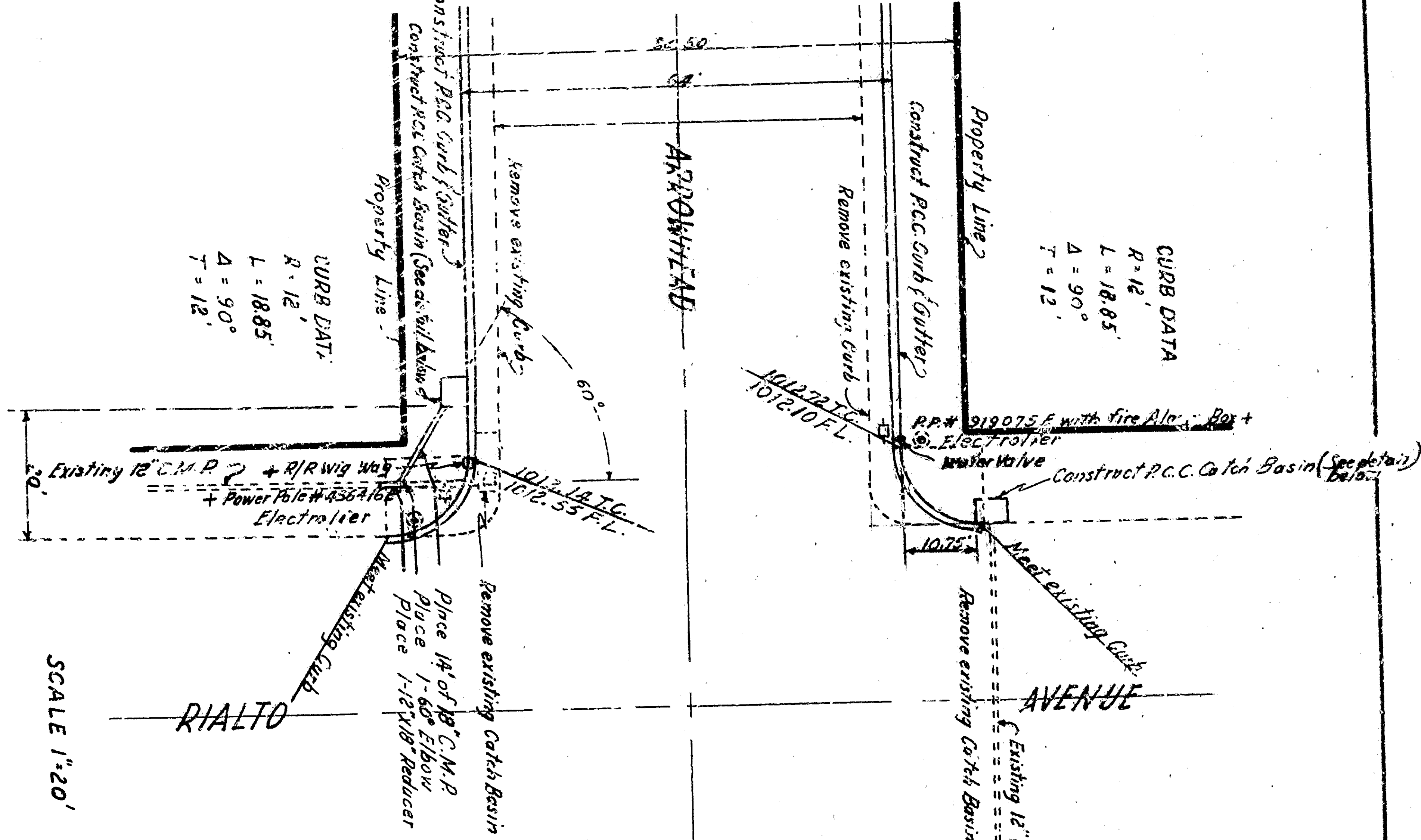
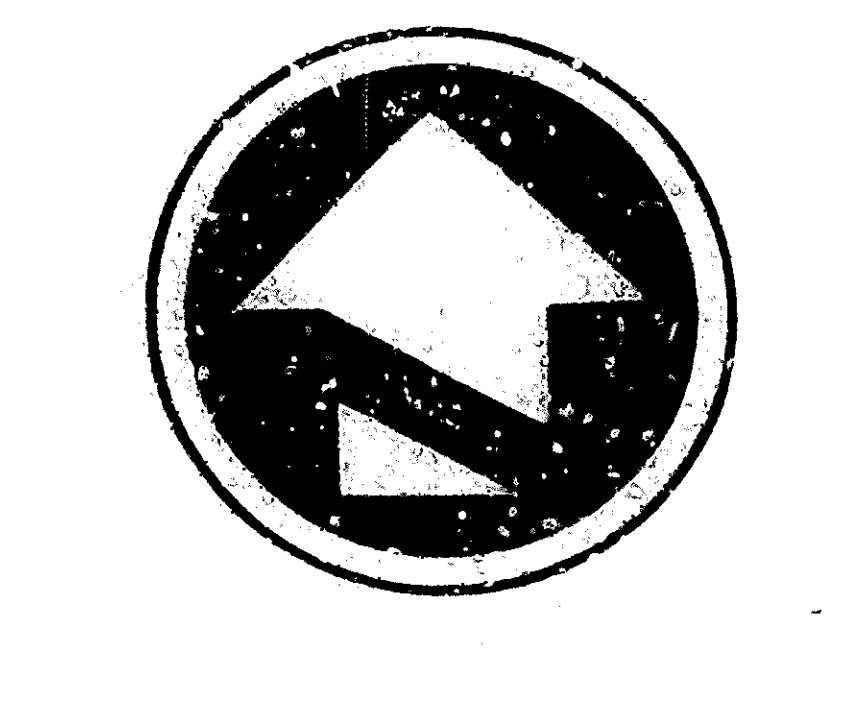
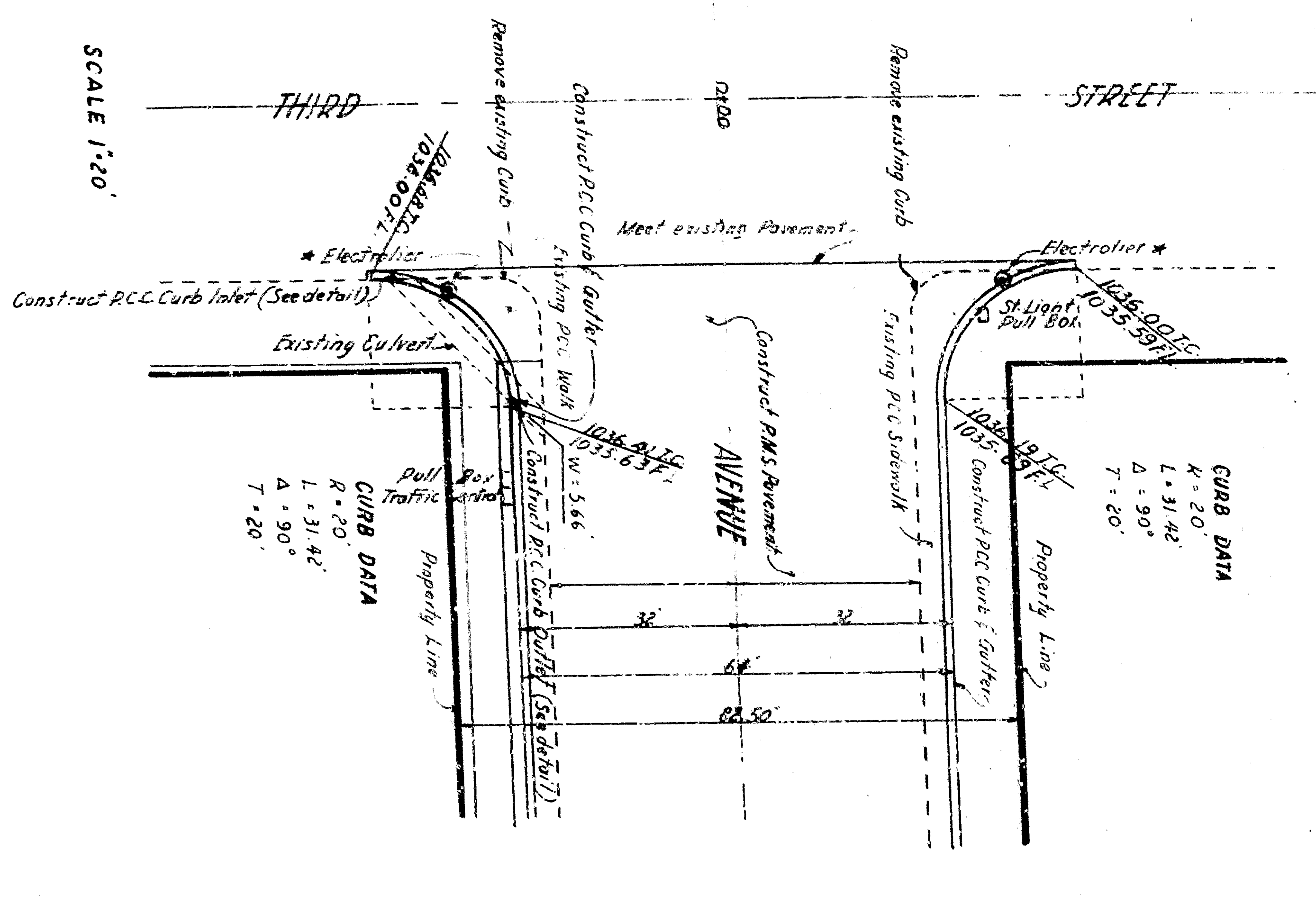


CITY OF SAN BERNARDINO
DEPARTMENT OF ENGINEERING
ARROWHEAD AVENUE
 BETWEEN RIALTO AVENUE AND THIRD STREET

APPROVED BY: [Signature]
 DRAWN BY: [Signature]
 CHECKED BY: [Signature]
 REGISTERED CIVIL ENGINEER NO. 9222

REFERENCES
 1. City of San Bernardino Engineering Manual, Section 900
 2. Standard Specifications for Highway Construction, Part 900

NOTES
 1. See Appendix B, Curbs & Gutters for details of curb & gutter construction.
 2. Curbs & Gutters to permit installation of 12" parking meters in base of file.



DEPARTMENT OF ENGINEERING
CITY OF SAN BERNARDINO
ARROWHEAD AVENUE
 BETWEEN RIALTO AVENUE AND THIRD STREET

SUBMITTED BY: [Signature]
 DRAWN BY: [Signature]
 CHECKED BY: [Signature]
 REGISTERED CIVIL ENGINEER NO. 9229

REFERENCE: [Blank]
 DATE: [Blank]